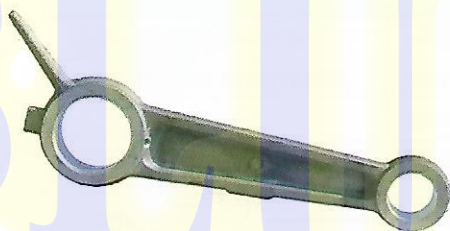


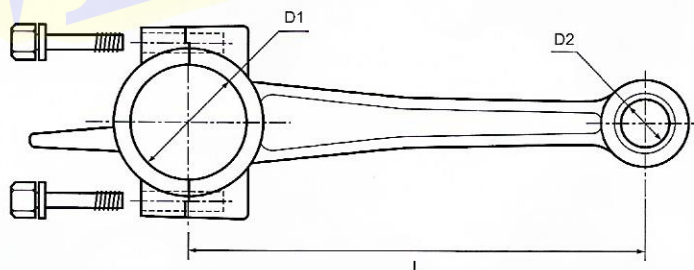
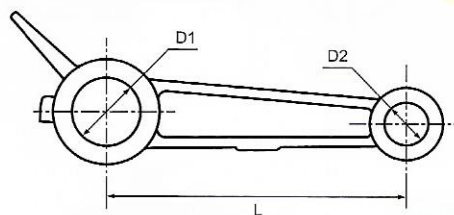
| Biela | | | | | | |
|-------|-------------|------------------|-------|------|----------|---|
| CLAVE | MODELO | DIMENSIONES (mm) | | | MATERIAL | APTO PARA MODELO |
| | | D1 | L | D2 | | |
| 9102 | 12.7P22 | 22 | 79 | 12.7 | Aluminio | SG1051, YAH1051 |
| 9103 | 14.5P22 | 22 | 79 | 14.5 | Aluminio | SG1065, YAH1065 |
| 9105 | 12.7P24 | 24 | 102 | 12.7 | Aluminio | SG2051, DV2051 |
| 9106 | 12.7P30 | 30 | 108 | 12.7 | Aluminio | SG2051A |
| 9107 | 14.5P30 | 30 | 108 | 14.5 | Aluminio | SG2065, SG3065, DV2065 |
| 9107A | 14.5P30-124 | 30 | 124 | 14.5 | Aluminio | DW3065 |
| 9108 | 15P32 | 32 | 137 | 15 | Aluminio | SG2080, SG3080 |
| 9108A | 15P35 | 35 | 91 | 15 | Aluminio | |
| 9109 | 20P32 | 32 | 137 | 20 | Aluminio | SG2090, YAV2090T, YAW3090T |
| 9110 | 17P42 | 42 | 161 | 17 | Fo.Fo. | YCV2080, YCW3080 |
| 9111 | 19P43.5 | 43.5 | 178.5 | 19 | Fo.Fo. | YAV2105T, YAV2105TX, YAH1105T, YAH1105TX |
| 9112 | 28P60 | 60 | 252 | 28 | Fo.Fo. | SG1155T, YAH1155T |
| 9113 | 22P45 | 45 | 180 | 22 | Fo.Fo. | YCV2100, YCW3100 |
| 9114 | 22P45A | 45 | 180 | 22 | Fo.Fo. | DV2100, DW3100 |
| 9115 | 28P56 | 56 | 217 | 28 | Fo.Fo. | DW3120 |
| 9115A | 28.6P46 | 46 | 210 | 28 | Fo.Fo. | |
| 9116 | 28.6P58.8 | 58.8 | 217 | 28.6 | Fo.Fo. | YCW3120 |
| 9117 | 22.4P44 | 44 | 158 | 22.4 | Fo.Fo. | YAV2120T |
| 9118 | 12P20-89 | 20 | 89 | 12 | Aluminio | LD-2050, LD-5050V |



14.5P22



19P43.5



Biela para Compresor con Motor Acoplado

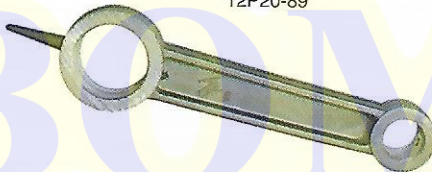
| CLAVE | MODELO | DIMENSIONES (mm) | | | MATERIAL |
|-------|----------|------------------|----|----|----------|
| | | D1 | L | D2 | |
| 5827 | 12P23-85 | 23 | 85 | 12 | Aluminio |
| 5828 | 12P23-94 | 23 | 94 | 12 | Aluminio |
| 5829 | 12P20-89 | 20 | 89 | 12 | Aluminio |



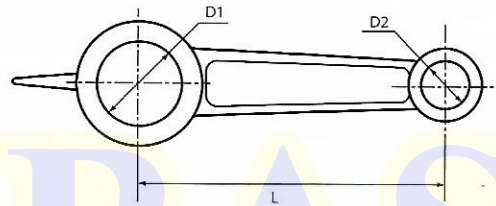
12P23-85



12P20-89

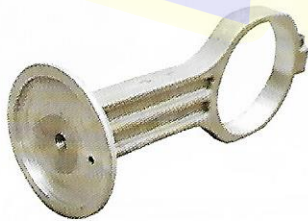


12P23-94

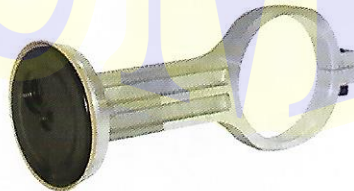


Biela para Compresor Libre de Aceite

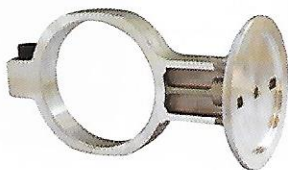
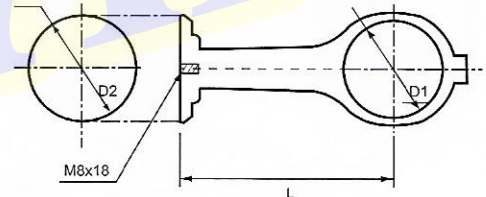
| CLAVE | MODELO | DIMENSIONES (mm) | | | MATERIAL | APTO PARA MODELO |
|-------|---------------|------------------|-----|------|----------|-------------------------------|
| | | D1 | L | D2 | | |
| B962 | 55P62 | 55 | 70 | 62 | Aluminio | SGW550HD, SGW750HD |
| 5830 | 62P62 | 62 | 127 | 67.5 | Aluminio | SGW1100HD, SGW1500HD |
| 9119 | LD-1550-BIELA | -- | -- | -- | Aluminio | LD-1550 |
| 9120 | 61.5P55-72 | 55 | 92 | 61.5 | Aluminio | LD-75024, LD-75030, LD-75035V |
| 9121B | 61.5P55-94 | 55 | 95 | 62 | Aluminio | LD-75030 |



62P62



61.5P55-94



55P62



61.5P55-72



LD-75030